

# SKYSTREAM<sup>3.7™</sup> 33.5 ft (10.2 m) Monopole Tower

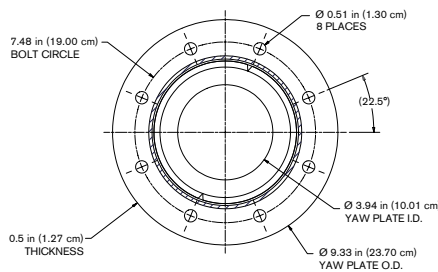
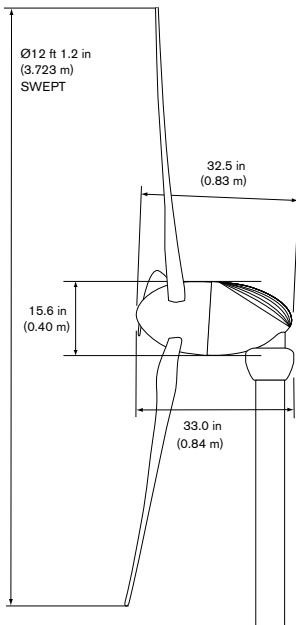
## Technical Specifications

**Tower:** Freestanding Tapered Tubular Steel / Galvanized Finish  
**Tower Weight:** 550 lb (249.5 kg)

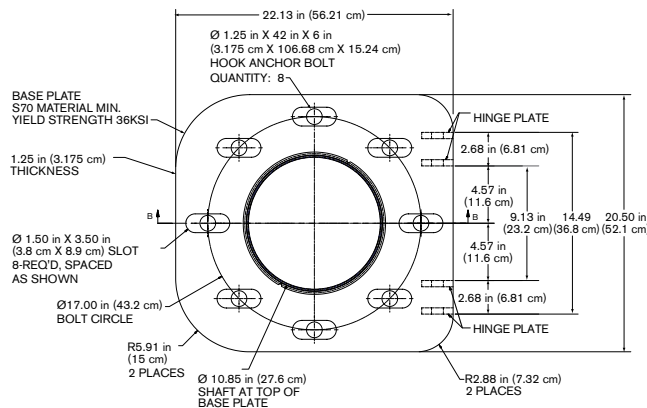
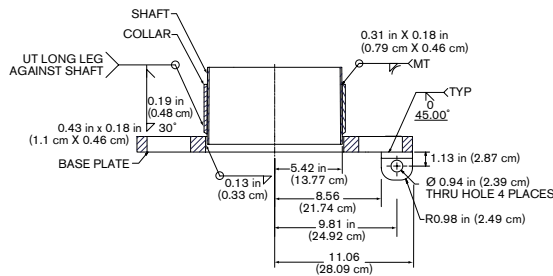
### Top of Tower Loads at 146 mph (65.3 m/s) wind speed

**Thrust Force:** 630 lb (2802 N)\*  
**Peak Bending Moment:** 1130 ft-lb (top of tower) (1532 N-m)\*  
**Downward Axial Force:** 230 lb (1023 N)\*

\*Loads do not include safety factor. SWWP recommends minimum safety factor of 1.5.



### 1. Tower Top



### 2. Tower Base

### Dimensions

**Prop Tip to Center of Tower:**

31 in (79 cm)

**Minimum Tip Clearance:**

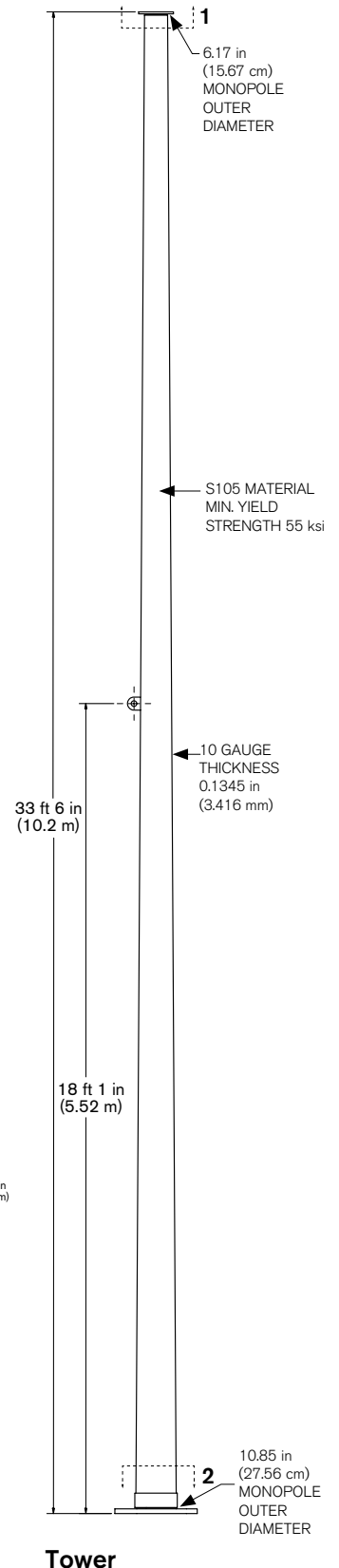
27 in (69 cm)

**Max Tower Diameter at Tip:**

8 in (20 cm)

### Southwest Windpower

1801 W. Route 66 • Flagstaff, AZ 86001  
 Tel 928.779.9463 • Fax 928.779.1485  
 www.skystreamenergy.com



**Tower**